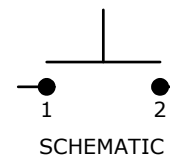
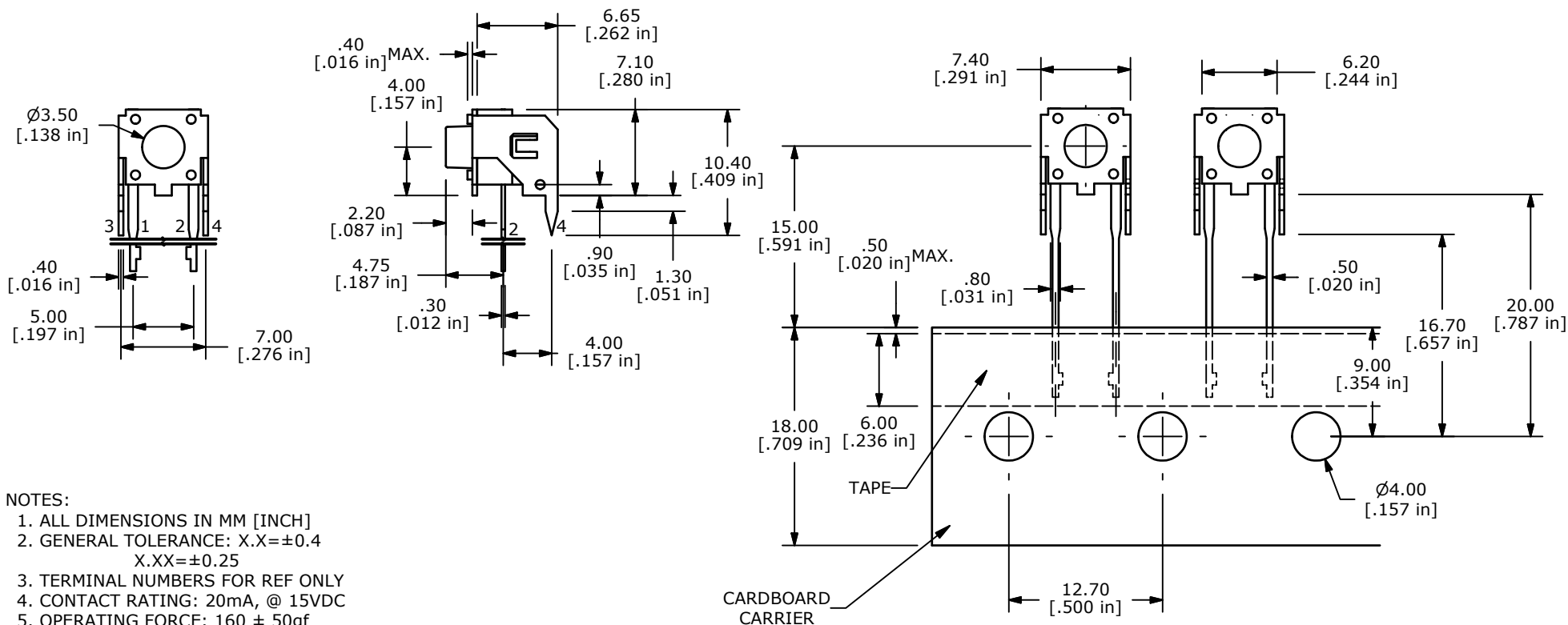


PCB LAYOUT



SCHEMATIC



NOTES:

1. ALL DIMENSIONS IN MM [INCH]
2. GENERAL TOLERANCE: X.X=±0.4
X.XX=±0.25
3. TERMINAL NUMBERS FOR REF ONLY
4. CONTACT RATING: 20mA, @ 15VDC
5. OPERATING FORCE: 160 ± 50gf
6. TRAVEL: 0.25 + 0.2 / -0.1 mm
7. CARRIES IS FOLDED EVERY 25 PITCHES
(24 SWITCHES PER FOLD)
8. 700 SSWITCHES PER BOX
9. CONTACT RESISTANCE: 50 mΩ MAX.
10. DENOTES CRITICAL PARAMETER.
11. 2002/95/EC (ROHS) COMPLIANT



TITLE TL58XF160Q				
SCALE	DATE	DR	DWG	REV
2:1	10/24/2011	BGL	P010573	F

F	20222	REVISED AND REDRAWN	10/24/11	BGL
REV	PCR NO	DESCRIPTION	DATE	BY
<small>THE INFORMATION CONTAINED IN THIS DOCUMENT IS PROPRIETARY TO E-SWITCH AND IS NOT TO BE COPIED OR TRANSFERRED</small>				